



Catch Up Funding 2020 – 2021

The government has provided funding to cover a one-off universal catch-up premium for the 2020 to 2021 academic year. It aims to support pupils to catch up for lost learning so schools can meet the curriculum expectations for the next academic year. Schools are able to spend the funding in the most effective way for pupils in their unique context.

Funding Allocation

Schools receive a total of £80 per pupil (for Reception through to Year 6), as follows:

- In 3 instalments - in Autumn 2020, early 2021 and summer 2021
- A total of £46.67 per pupil split across payments 1 and 2
- £33.33 per pupil for payment 3

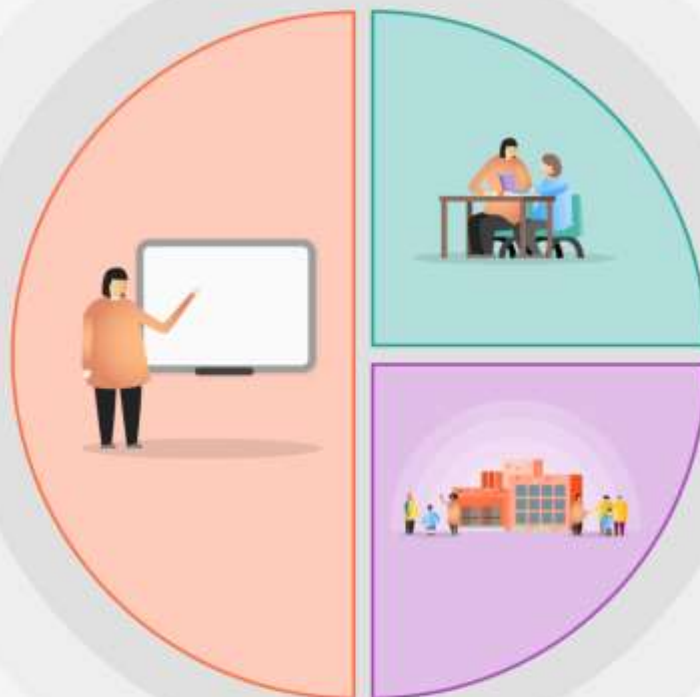
The pupil number will be based on the Autumn Census 2020 and is detailed in the table below.

Total Number of Pupils on Roll (Autumn Term Census Year 3 – Year 6)	279
Proportion of PPG pupils	90
Proportion of SEND pupils	54
Funding	£22,320

1 Teaching

Priority actions to improve QFT

- Identification and planning of a bespoke curriculum designed to support children to have the essential skills for their year group (kick start curriculum)
- Training for teachers on the Kick start curriculum
- Ongoing release for training in maths mastery (identified as need)
- Rainbow Grammar inset x3 (identified as area of need) and associated resources
- Teacher release time to support curriculum development



2 Targeted academic support

Priority actions to support targeted academic intervention:

- Catch up numeracy Training
- Purchase of SALT resources
- Training of 1 TA in reading intervention

Training in targeted interventions support Emotional Aspects of learning

- ELSA
- Drawing & Talking training for 1 staff member

3 Wider strategies

Priority actions to support wider strategies: -

- Remote learning support in form of IT support and additional resources
- Development of classroom equipment to support remote learning to ensure ongoing

Tier	Problem (WHY?)	Intervention description (WHAT?)	Implementation Activities (HOW?)	Implementation Outcomes (HOW WELL?)	Cost (HOW MUCH?)
Tier 1,2,3	What needs to change?	What are the essential 'active ingredients' of the intervention?	How will it be done? What blend of activities are required?	How will you know that it is working? Do staff feel the approach is feasible and useful?	What is the cost to the school?
Tier 1	Improve Staff teaching to aid children to reach ARE in key curriculum areas	Recovery (Kick Start) Curriculum development, planning, training & implementation	2x SLT members to develop and write recovery curriculum INSET time	Improved attainment in cohorts	Release time for SLT £16110 part of TA appointment
Tier 1	Mastery approach to maths teaching in LKS2 and UKS2	Whole school CPD	2x Staff members attend training through Maths HUB	Improved maths attainment Maths mastery Confident children	Release time for staff members £part of TA
Tier 1	Teaching of Grammar supports high attainment and underpins chn reaching ARE	Staff CPD	3x Insets Purchase and creation of resources	Improved attainment in grammar High quality teaching of grammar is seen across the school	£1663 for training £205 for resources £236 for release TCH
Tier 1	Teacher release time to ensure our curriculum supports pupils post covid19	Review of our wide Curriculum and development to support our community post CV19	Coaching of staff by SLT member to improve curriculum to support our children's learning	Our curriculum supports our children post CV19 to have increased attainment & engagement in the wider curriculum	Release time for SLT/staff members £16110 part of TA appointment
Tier 2	Maths has been highlighted as an area of need in published data	Catch up numeracy training of all TA's	All TA's trained through catch up or cascade	Chn receive proven and published intervention and maths attainment/progress is accelerated.	£799 Release time £1467
Tier 2	Children's speech and language needs have risen following lockdown	Purchase and training on SALT intervention	One TA trained to assess and deliver intervention	Groups of chn make progress with S&L supporting SEMH and English	£470
Tier 2	Children's SEMH needs have risen following lockdowns	Purchase and training in SEMH intervention	Purchase and training in Drawing & Talking of pastoral lead	Specific chn are well supported on their return to school and in the restorative period following.	£270
Tier 3	Children will continue to need to access remote learning due to lockdowns/isolations etc	Purchase of classroom equipment to support continued remote learning	Purchase of mics/pcs/video cams	Chn's learning is not disrupted by lockdowns and isolation periods – they can continue to engage with classroom learning through remote teaching	£1100

Total spend: £22,320